

**SEA** 

A COHORT PLC COMPANY

**Engineered to Protect**

# Engineered to **Protect**, your safety is our mission.

We are developing and delivering advanced Defence systems to make our world safer, cleaner, and more efficient. Together, through teamwork, collaboration, and innovation, we're delivering operational advantage to our customers while building a more sustainable future for all.

In the defence domain, our systems are installed throughout the UK Royal Navy fleet and major navies across the globe. We also provide whole-life support and maintenance services, working closely with customers and platform providers to ensure continued operation.

We are a subsidiary of the Cohort Plc Group which also allows us to partner with other companies across the Group, such as EID in Portugal to deliver high tech communications and command & control solutions and MASS, a leading expert in Electronic Warfare, Cyber and information management. These highly valuable collaborations allow SEA to offer a wider range of products and total solutions packages to the international market.





**Rapidly**  
Responding to  
Modern and  
Emerging Threats



AIR ESCAPE  
SEA RESCUE USCG  
↓



## SHIP AND FLEET PROTECTION

The challenges facing the armed forces across the globe right now are ever-changing. We're proud to have the capability and ability to act accordingly and understand the complexity of requirements.

You need to know that, at any time, you can deliver a rapid response to complex surface, subsurface and air threats. We manufacture and support a wide range of ship and fleet protection capabilities, as used by the UK Royal Navy and multiple navies across the globe. Our intelligent systems provide agile solutions in nature's most challenging environment against ever-evolving threats.

# TORPEDO LAUNCHER SYSTEMS



## Torpedo Launcher System

Our key capability in Ship and Fleet protection is our intelligent Torpedo Launcher System - the preferred system for the UK Royal Navy.

It provides fully qualified, proven rapid launch for a variety of NATO standard calibre lightweight torpedoes. Easily configured and flexible for any of the weapons currently in service, its design meets the requirements of ships varying in size and structure.

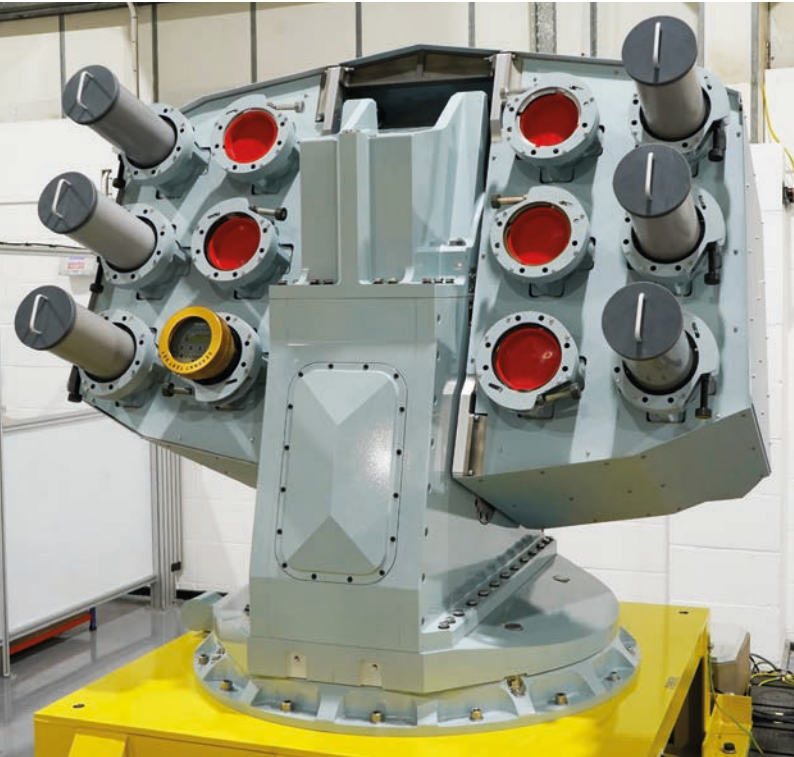
The Torpedo Launcher System is a close range, and rapid-reaction system capable of firing a variety of NATO-compatible standard light weight torpedoes, including the US Mk44, Mk46 and Mk54 torpedoes, UK Sting Ray, Italian A244S, French MU90 and the Korean Blue Shark.

Highly flexible due to its unique modular design, the system can also be configured to use other weapons on an individual basis. This will enable the Navy to retain control of its supply chain through a choice of suppliers for ammunition, delivering greater flexibility and long-term value.

### Features & Benefits

- Modern upgraded electronics for ease of integration
- Open architecture enables long-term supportability and compatibility for future developments
- Enables Navies to select suppliers for ammunition; delivering greater flexibility and long-term value
- Easier and cost-effective upgrades throughout its service life
- Available as a containerised module to enable efficient deployment on vessels of differing size

# COUNTERMEASURE SYSTEMS



## ANCILIA

### Ancilia

Delivering the effective, rapid threat protection you need, our trainable Electronic Warfare Countermeasures System, Ancilia, offers a highly modular, reliable and intelligent solution for incoming air, surface or subsurface threats.

Developed through a long history in providing decoy and torpedo launching systems to the UK Royal Navy and global navies, Ancilia will contribute to overall ship and fleet protection, particularly where the platform no longer has time to manoeuvre itself as part of self-defence doctrine.

Ancilia is decoy-agnostic and can be configured to launch standard 130mm NATO decoys. It boasts an open architecture and can be retrofitted onto existing platforms with original equipment manufacturer software.

### Features & Benefits

- Modular and flexible system, tailored to each platform and decoy round type.
- Compatible with existing CMS systems and can be fitted to new and existing platforms.
- Available as a containerised module to enable efficient deployment on vessels of differing size

Protecting you in  
an increasingly  
complex  
Undersea  
Battlespace







## UNDERSEA BATTLESPACE

The undersea battlespace is complex and ever-changing – we are ready and able to adapt.

Our Krait product family has been designed with safety and security in mind. Suitable for a range of operations from Anti-Submarine Warfare to environmental and conditions monitoring, we have the ability to tailor our systems to best suit your requirements.

### Agile Platform ASW

In an increasingly congested underwater battlespace, coverage and scalability of your Anti-Submarine Warfare capability is key to securing operational advantage. With considerable experience, we understand how uncrewed platforms can work in tandem with crewed platforms to cover a larger surface area and enhance the probability of intercept.

In order to deliver the highest possible service to you, we continually test our system boundaries and influence future developments.

# UNDERSEA BATTLESPACE



## KraitArray

Our miniaturised digital, thin-line towed array sonar system, KraitArray, is a world-leading sensing system with the ability to integrate across a variety of platforms utilising modern, cutting-edge technology.

KraitArray is in-service across the globe with multiple navies and research bodies, and can be used for a variety of monitoring applications including Anti-Submarine Warfare.

### Features & Benefits

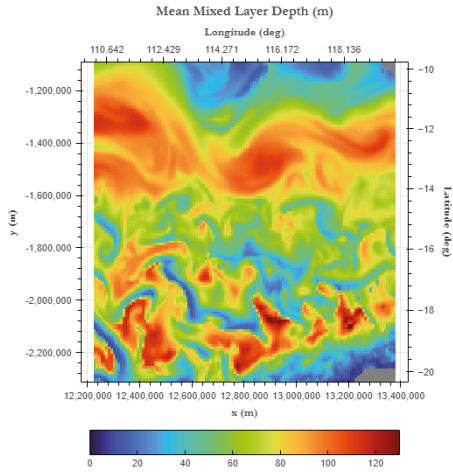
- Reduced cost
- Low drag
- Small diameter (20mm comparable to standard 85mm)
- Plug and play integration
- COTS though-life savings
- Continual hardware and software development by SEA

## KraitSense

KraitSense is a high performance, passive thin line towed array ASW system that has been reduced in size, weight, and power to enable an ASW capability to be deployed from smaller, crewed or uncrewed non-ASW-specialist vessels, such as OPV's, submersibles and coastal patrol crafts.

### Features & Benefits

- Flexible, scalable, modular, and small footprint ASW solution suitable for navies of all sizes - and crewed and uncrewed platforms
- Designed for smaller platforms such as OPVs or uncrewed vessels that are unable to accommodate a full-sized towed array sonar or supporting equipment
- Can be retrofitted to existing platforms.
- Proven capability with a number of crewed and uncrewed vessels including: Msubs XLUUV, Exail's DRIX, and LRI's WaveGlider and a Portuguese Navy OPV.

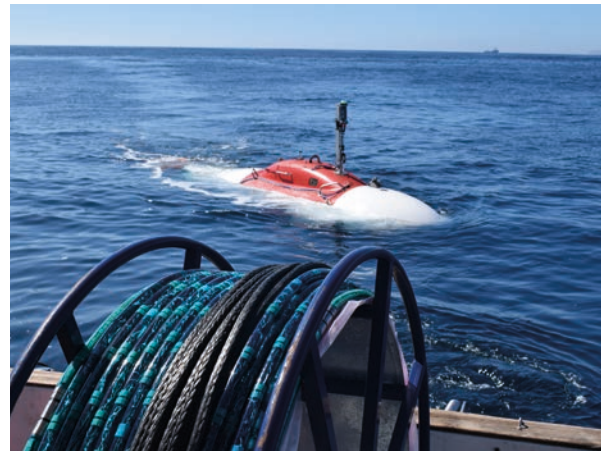
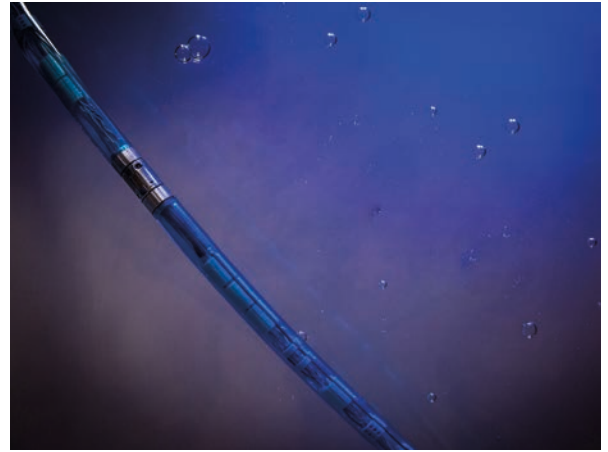


## KraitOptimise

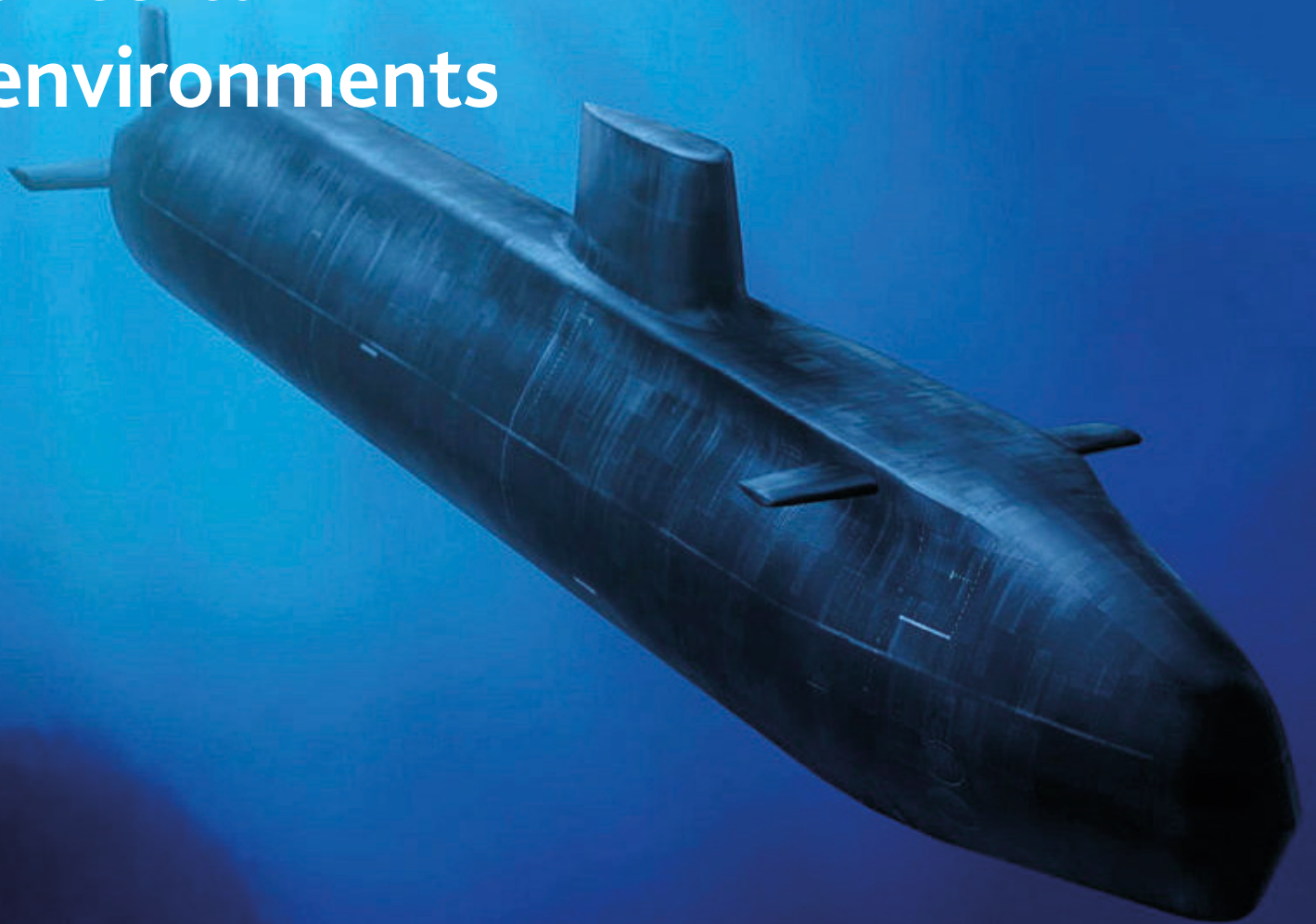
Supporting Anti-Submarine Warfare, uncrewed vessel operations, and protection of Critical National Infrastructure.

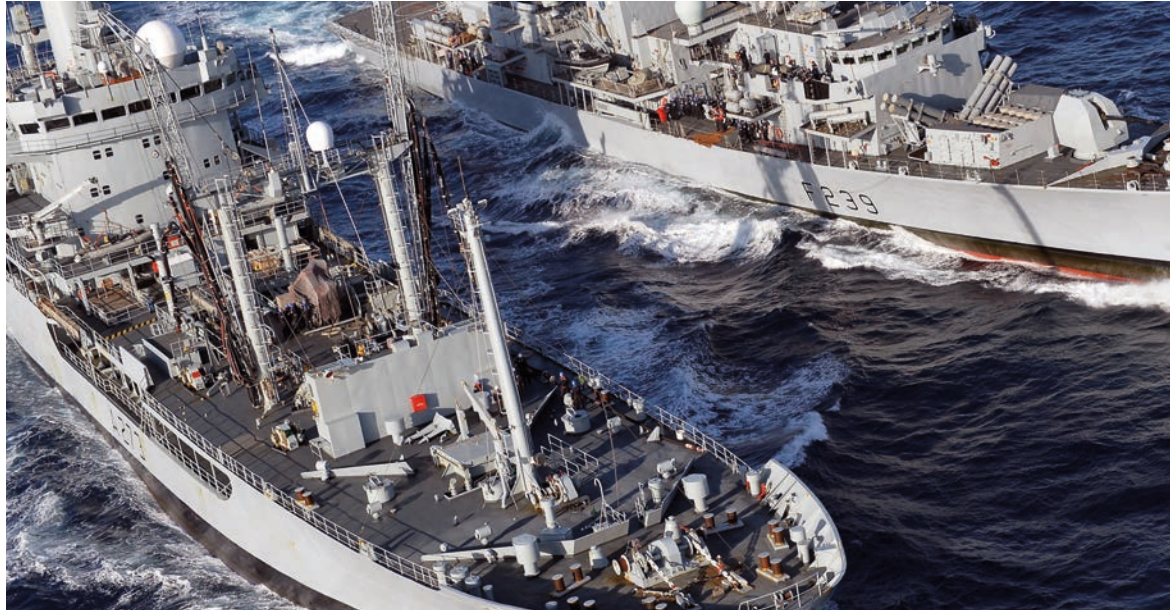
KraitOptimise addresses the need to increase underwater situational awareness, using high quality environmental and ocean model data sources to understand the complexity of the underwater environment and ultimately optimise sonar operations for vessels of different sizes.

KraitOptimise can be a complimentary product to ASW-capable vessels (such as those with KraitSense).



Securing your  
communications  
**reliably** in  
uncertain  
environments





## COMMUNICATIONS SYSTEMS



We have extensive experience and a successful track record of delivering communications systems to the UK Royal Navy and international customers across a range of surface and underwater vessels.

Providing industry-leading communications systems for naval platforms, we're connecting critical national defence capability together while meeting the highest levels of availability, reliability, and maintainability.

Our Communications Systems are highly reliable and adaptable to meet growing and complex global challenges, and our open architecture means we deliver low cost upgrades and replacements of system elements.

We also easily integrate legacy, current and future communications devices, reducing the workload of the operator.

Keeping our  
people safe,  
**Through Life**





## SUPPORT AND SERVICES

We deliver dedicated in-service support where experienced project managers, engineers and domain specialists work closely with customers and naval staff to keep platforms operational.

We build trusted relationships with our customers and partners, working closely with them to ensure their platforms are at optimal standard. As part of our service, we undertake regular surveys, maintenance, and routine updates, which help us make informed recommendations to ensure operational advantage.

With support services in place across the globe, our teams are formed of experienced and highly skilled people, many of whom served in the armed forces prior to joining us here at SEA. Their experience means they are able to undertake on-vessel service and support tasks, and also train platform personnel on equipment handling and use.

## OUR VALUES



### Safety

We operate safely and responsibly, protecting each other and the environment.

---



### One SEA Team

We are in this together. One team, working ethically, respectfully & professionally. We take responsibility and challenge each other constructively.

---



### People Focused

We all contribute to making our culture one that is supportive and empowering; where everyone can grow and develop, feel valued and rewarded. We prioritise a healthy work-life balance.

---



### Delivery Excellence

We exceed our commitments by delivering timely, quality outputs whether that's for each other or our clients and partners. We are always looking for ways to innovate and continuously improve.

---



### Trusted Partners

We partner strategically, collaboratively and always with integrity; whether that is between us inside SEA or externally.





# CONTACT US

**Beckington**  
17 Castle Corner, Beckington,  
Frome, Somerset, BA11 6TA

**Bristol**  
Building 450, Coldharbour Lane,  
Bristol Business Park, BS16 1EJ

**Barnstaple**  
Riverside Road, Pottington  
Business Park, Barnstaple, North  
Devon, EX31 1LY

+44 1373 852 000

info@sea.co.uk

www.sea.co.uk

**f** OurLifeAtSEA

**in** Systems Engineering &  
Assessment Ltd



A COHORT PLC COMPANY

